

PLAY YOUR OWN STYLE...



[fusiontables]
by avonmore

8

THE FUSION TABLE MAKES THE DIFFERENCE

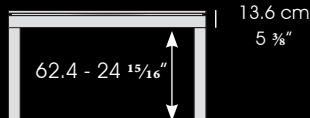
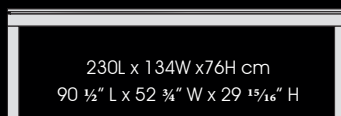
Times are changing, trends are succeeding one another... but, undoubtedly, the word «fusion» has become more than a concept. We have fusion of generations, fusion of cultures, fusion cuisine, fusion music. Today, we are offering Fusion furniture.

Nowadays, a good product is not just a good design but also an environment: the life and the people which the product targets and their need to create valuable moments.

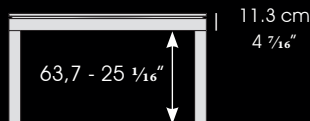
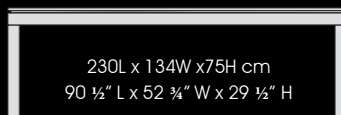
Offering emotion and quality time, these are the core values of the Fusion table that make the difference.

Designed to entertain, the Fusion table has exactly what is needed to create wonderful and unforgettable moments for you, your family and guests, all in a resolutely contemporary setting.

WOOD-LINE



METAL-LINE









ENJOY YOUR MEAL...

Functional, with a timeless and elegant design, the Fusion table creates a relaxing atmosphere for dinner with family or friends. Able to seat 10 people comfortably, the Fusion table is perfect for family or professional meetings.

The generous width of the Fusion table offers you the opportunity to set a table of rare elegance and will be very practical and comfortable for your receptions.

... AND PLAY !

After the meal, it takes less than a minute to change the Fusion table into a top-of-the-range billiard table.

Just slide the benches under the table, remove the three table tops and pick up the billiard cues, triangle, Aramith billiard balls and chalk. You are ready to start a game. With a simple click, the patented «easylift» system raises the table to the required height for a billiard game.

This billiard table strictly complies with the dimensions of a 7-foot American table. Enjoy the technical standards of a genuine billiard table in the comfort of your home or office. Both experienced players and amateurs will enjoy it.



PATENT PENDING EASY-LIFT SYSTEM[®]



The optional spring assisted Easy-Lift system allows to raise the Fusion table with minimal effort adding 3" / 75 mm from standard 29.5" / 75 cm dining height to optimal playing height.

The system requires no maintenance and has a patent pending auto-lock auto-level feature assuring perfect leveling, and maximum stability & steadiness to the Fusion table in its upper position.

HIGH QUALITY EQUIPMENT



The combination of premium equipment with the finishing expertise only passionate artisans can assure, results in a design dining pool table that everyone perceives as exceptional and that has a longevity to last several generations.

High-quality components, modern materials, and the meticulous selection of the very best timber are essential characteristics of the Fusion quality.

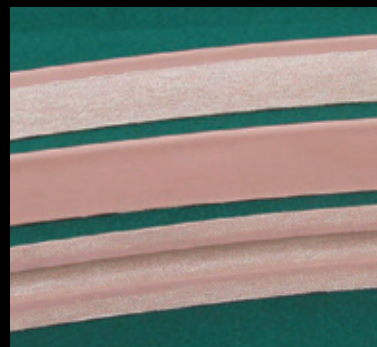


FLAT POCKET SYSTEM (patent pending)



With its unique flat pocket system, all billiard accessories, cues and rack but also the balls can be stored in the Fusion's elegant 12 cm (4 1/2") narrow table top. These pockets made of memory nylon extend underneath the table when pocketing balls, but return to their flat non-visible position when the balls are removed. At the end of the game, metallic strips can be slid over the 6 nylon pockets allowing to store balls in each one of them without having the nylon pockets stretching downwards.

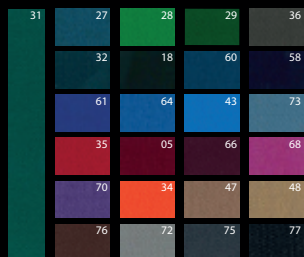
"K66" RAILS



The Fusion billiard table is fitted with K66 rails, known for offering one of the best rebounds for great precision in the game.



SIMONIS TABLE CLOTH



Simonis

The Fusion table is always fitted with Simonis table cloth, worldwide considered to be the ultimate benchmark for high-quality cloth.

These cloths, containing at least 85% wool, guarantee optimum speed, a smooth roll, easy maintenance and an exceptional lifespan.

A ONE PIECE SLATE



The Fusion table is delivered with a 3/4" / 19 mm high precision cut natural slate.

Already covered with cloth, this 1-pce mono-bed slate on Fusion's rigid Space-Frame avoids all adjustment problems common with the usual 3-pce slate surfaces.

METAL LINE

STAINLESS STEEL MODEL

Specifications

Table dimensions

2.30 m x 1.34 m; height: 0.75 m

90.6" x 52.8" ; height: 29.5"

Playing surface

1.92 m x 0.96 m

75.6" x 37.8"

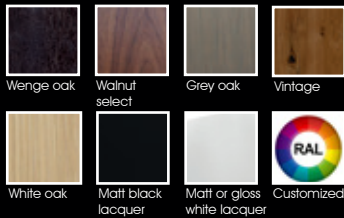
Optimum dimensions for the dining room*

4.90 m x 3.95 m

192" x 154"

(* With standard & Pro-Cup Aramith accessory kits.

For this top-of-the-range line, the table's structure and legs are in brushed stainless steel.



THE POWDER COATED MODEL

Specifications

Table dimensions

2.30 m x 1.34 m; height: 0.75 m

90.6" x 52.8" ; height: 29.5"

Playing surface

1.92 m x 0.96 m

75.6" x 37.8"

Optimum dimensions for the dining room*

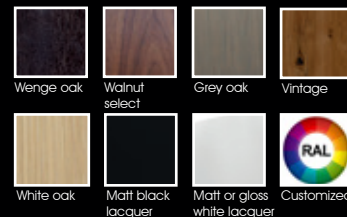
4.90 m x 3.95 m

192" x 154"

(* With standard & Pro-Cup Aramith accessory kits.

This line has a steel structure that is powder-coated with epoxy for optimum resistance to scratching and corrosion.

Available in 3 colours: Aluminium grey, Satin white RAL9003 and Satin black RAL9005.





VINTAGE COLLECTION



The New Vintage collection is marked by a unique and easily recognisable style. A perfect mix between reclaimed wood timbers and a post-industrial metal frame. Sober and original, yet relevant and groundbreaking, the Vintage dining pool table provides class to any space through its perfect blend of chic and tradition.

Old oak wooden floors have been sourced in rural Spain and recycled into beautiful vintage panels which are then married with old powder blue Iwan Simonis cloth. The result is stunning, inviting you to breathe the air of an old Brooklyn workplace or a typical 80's English pub without leaving your dining room.



WOOD LINE



WOOD-LINE COLLECTION



Specifications

Table dimensions

2.30 m x 1.34 m; height: 0.75 m
90.6" x 52.8" ; height: 29.5"

Playing surface

1.92 m x 0.96 m
75.6" x 37.8"

Optimum dimensions for the dining room*

4.90 m x 3.95 m
192" x 154"

(*) With standard & Pro-Cup Aramith accessory kits.



Wenge oak



Walnut select



Grey oak



White oak

Is it an impossible challenge to mix nature and design ? The fusiontables concept is addressing this challenge by mixing a sleek and minimalistic design with natural components. Its authentic and timeless character is bringing a special Fusiontables brand to your home.

Nature lovers who are passionate about wood material will love this new range, blending seamlessly into natural and zen spaces but also complimenting the user's way of life.

Own the real thing, play with nature, and enjoy the Woodline effect at home to create your own story and soft aesthetic.

For this top-of-the-range line, the table's structure and legs are in veneered wood.



[AT HOME]



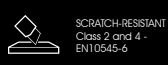
[AT WORK]



Discover the latest generation ceramic and wood concept from Fusiontables...



Rock Reverso



The 3mm TECHLAM® panels, selected for our Rock Reverso Collection, provides the final touch to produce perfect modern furniture pieces with beautiful contemporary design.

The new Rock Reverso option allows you to create a changing ambience in your dining room by providing two different surfaces in one conceptual table top: one face is covered by wood veneer, the other by ceramic. Rock Reverso is the most resilient surface you can specify for your Fusion pool table. Long lasting and easy to maintain, this exclusive and modern material presents antibacterial and antifungal properties and is superbly environmentally friendly as the raw materials used to produce the panel are from recycled sources, removing the impact of extracting new stone.



FUSION SIDEBOARD

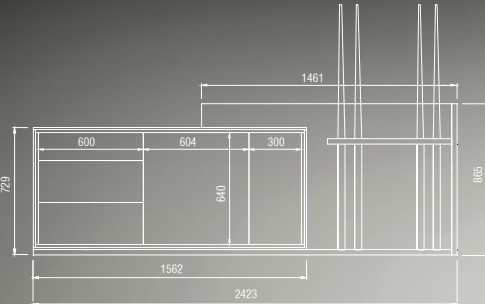
Discover the NEW Fusiontables sideboard-buffet 2017 series. Beautiful furniture pieces conceived in the 'Fusion' spirit, available in two lengths to suit your space. Mixing pure lines and Fusion table wood craftsmanship, and adding to the portfolio of our superb multipurpose, contemporary furniture collection.

This brand new modular concept consists of a storage unit made of high-quality lacquered wood in black or white satin or gloss, equipped with 3 possible add-on units to match the colours of your table. More than a piece of storage furniture, the Fusion sideboard also enables the Fusiontables table tops to be kept in a safe place during play and to house your cues and accessories when your pool dining table is hosting your guests.

Your choice of a combination of drawers, small doors, large doors or open boxes will bring an artistic, original and customized touch to your interior, with a smooth and minimalist perspective completing the Fusiontables experience in your dining room.



- Flexible from 212 cm to 242 cm in length. Fixed height at 86cm. Depth : 50 cm.
- Perfect matching of wood veneers between the Fusion table and the complementary storage pieces.
- Drawers and doors maintain clean lines with touch latch opening.
- Pre-assembled storage unit and box units for quicker assembly.
- Possible reconfiguration of the units even after assembly is completed.

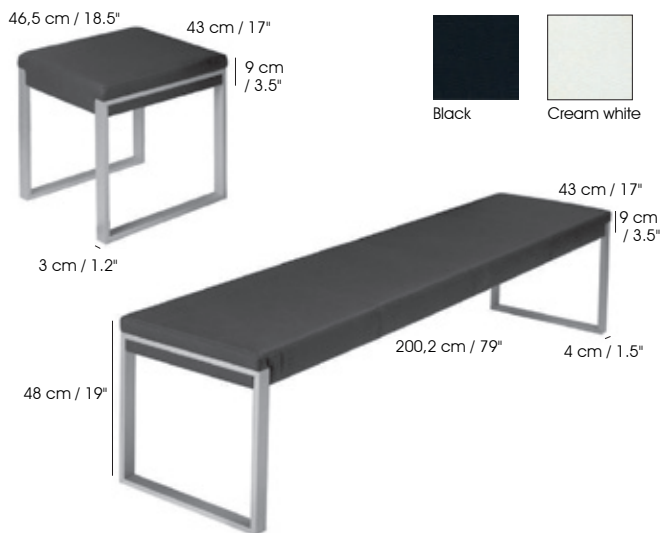


NEW

MATCHING BENCHES AND STOOLS

The FusionTable lines include also a variety of benches and stools, that matches the tables pure and delicate lines that enhance the contemporary look. To free the playing area, these Fusion benches and stools have been designed to be stored under the table during the game.

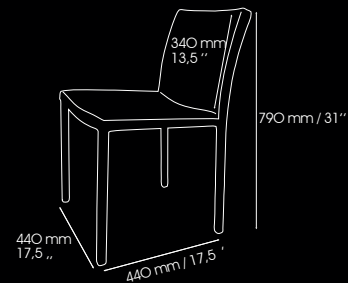
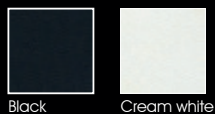
- Lacquered aluminium (powder coating) or stainless steel structure that match the Fusion table's colours.
- Multifiber covering: black, white.
- Overstitched seams for a perfect «leather» effect.
- Firm seat thanks to compact and comfortable foam.
- Bench for 4 people, stool for one person.



FUSION CHAIRS

The Fusion chair has been specially developed by the Fusiontables design team. Its black microfiber leather covering makes it extremely comfortable as well as easy to clean and matches with other items.

The Fusion chair back has been designed to sit flush to the Fusion table in its higher position so as not to disturb players during a game of billiards. So there is nothing to put away before playing.



FUSION LED SYSTEM

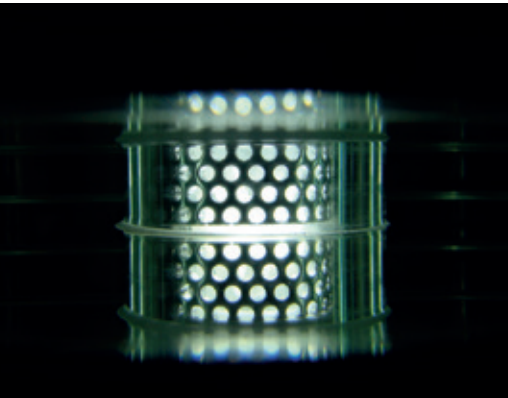
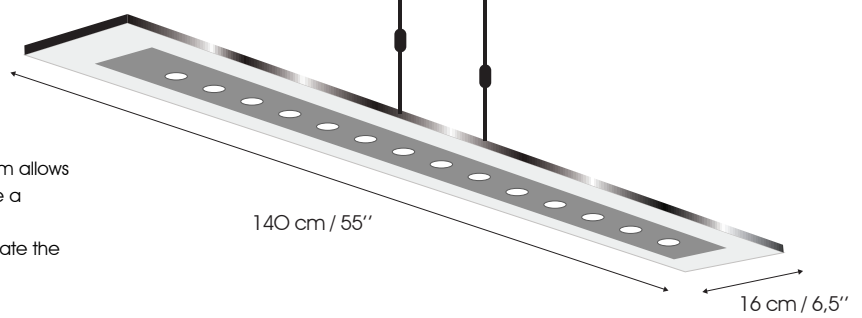
With this light and contemporary pendant lamp, the Fusion LED system allows you to create two atmospheres. During meals, the 7 white LED create a pleasantly intimate environment for your guests. When playing billiards, 14 long-life LEDs offer a stronger light to illuminate the entire table.

Economical and environmentally-friendly.

Consumption: 42 Watts

Intensity: 1050 Lumens

Light colour: 3500 Kelvin

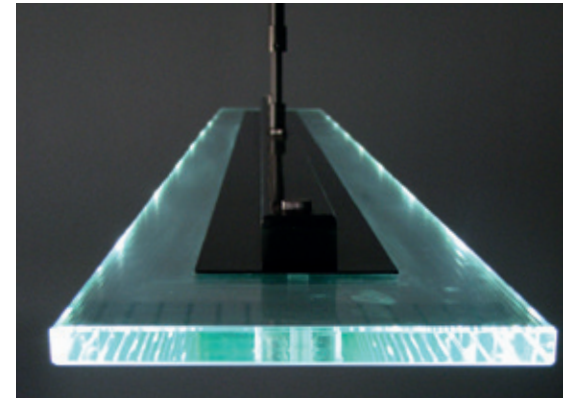


Characteristics:

- Operates with a 200 - 240 Volt transformer and a group section switch.
- SEC 12 - 35 V 700 mA
- Net weight: 10 kg
- Material: glass & metal, satin nickel finish.

The transformer and LED switch are certified EC/VDE

Dimensions: 16 cm wide / 140 cm long. The light can be positioned at a distance between 70 and 115 cm (27.5" and 45" 1/4) from the ceiling.



LIMITED SERIES

Fusiontables has joined forces with Champagne Veve Clicquot to launch a limited edition of the Fusion table. The Fusiontable team developed a dedicated yellow version of both table and balls, in the Veve Clicquot inspirational colour, that brings beauty, mystery and definitely catches the eye.

OPTIONAL ACCESSORIES



aramith® Standard Kit

Balls and related items

- 1 set of Aramith Crown Standard balls
- 1 bottle of Aramith ball cleaner
- 1 Aramith micro fibre cloth
- 1 wooden triangle

Cues and related items

- 4 two-piece billiard cues to be screwed together
- 1 two-piece bridge stick to be screwed together
- 1 bridge head
- 1 6-cue rack
- 1 cue repair kit
- 4 Aramith chalks

Other accessories

- 1 table brush
- 1 rule book



aramith® NEW Premium Kit

Balls and related items

- 1 set of Aramith Premium balls
- 1 bottle of Aramith ball cleaner
- 1 Aramith micro fibre cloth
- 1 wooden triangle
- 1 9-ball rack

Cues and related items

- 2 58" (147 cm) billiard cues
- 2 48" (122 cm) short billiard cues
- 1 two-piece bridge stick to be screwed together
- 1 bridge head
- 1 6-cue rack
- 1 cue repair kit
- 4 Aramith chalks

Other accessories

- 1 table brush
- 1 under rail brush
- 1 leather tally shaker bottle
- 1 set of wooden tally balls
- 1 rule book

aramith® Pro Cup Kit

Balls and related items

- 1 set of Super Aramith Pro-Cup balls (including the famous 6 red dots cue ball)
- 1 Jim Rempe training ball+ manual
- 1 wooden triangle
- 1 9-ball rack
- 1 bottle of Aramith ball cleaner
- 1 Aramith micro fibre cloth

Cues and related items

- 4 two-piece billiard cues to be screwed together
- 1 two-piece bridge stick to be screwed together
- 1 bridge head
- 1 6-cue rack
- 1 Deluxe cue repair kit
- 6 Aramith chalks

Other accessories

- 1 table brush
- 1 under rail brush
- 1 leather tally shaker bottle
- 1 set of wooden tally balls
- 1 rule book





In a world filled with short-lived products inspired by ever-more fickle trends, consumers are once again demanding to be placed at the centre of things, and they expect their homes to be able to adapt to their way of life. More than ever, The modern user is looking for a product with strong identity that he can identify with. Fusiontables offers a new vision of what design can be in this modern context.

More than just a pool table that doubles as a dining room table, this unique and distinctive concept is also an organisational solution for numerous pool players and architects. It brings together people from all generations for an enjoyable festive or sporting moment. It is also a unique original and timeless upmarket object that will remain the centrepiece of your home.

Designed to entertain, the Fusion table has exactly what is needed to create wonderful and unforgettable moments for you, your family and guests, all in a resolutely contemporary setting.

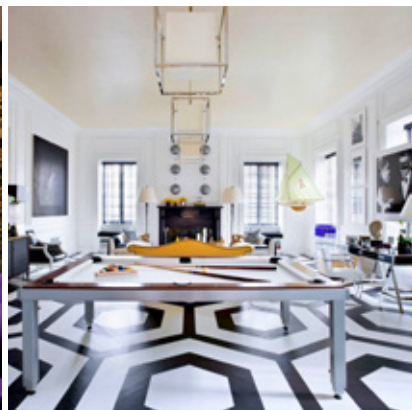
 saluc^{S.A.}

 aramith 
BILLIARD BALLS

SINCE 1680
Swan Simonis
SIMONIS CLOTH



Inspire yourself...



[fusiontables]
by Aramith®